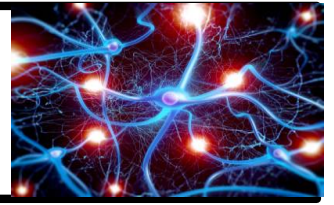




Learning Enhancement Advanced Program



Brain Integration 1

Instructor: Jacque Mooney

Take a QUANTUM LEAP in Understanding and Correcting Specific Learning Difficulties such as Dyslexia and Attention Deficit Disorder!

The Brain Integration Program - LEAP - is a 7 part Learning Experience that will change many people's lives by disclosing the real "Cause" of Specific Learning Difficulties and providing a Step-by-Step approach to their Resolution.

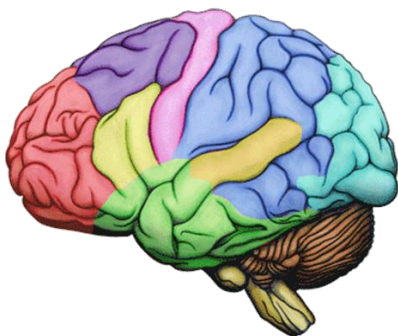
Based on the hierarchy of brain function involved with the learning process, LEAP has been recommended by psychologists, teachers and other health care professionals because it consistently produces improvements measurable by standard psychological tests.



LEAP provides a powerful way to set up the body biocomputer for correction using Applied Physiology formatting from the Anatomy and Physiology of the Brain course.

LEAP teaches you HOW to correct learning problems, WHAT you need to correct, and the ORDER the corrections need to be made. Both theoretical and clinical considerations will be covered in detail with regard to each assessment and correction procedure presented. Once the relevant imbalance is on the biocomputer, each practitioner will then correct it with the skills they have available. **Learning problems are not limited to school children - if you have problems in any area of your life that you are not able to resolve - this is a Learning problem.**

[LEAP is a way to open your clients to a new way of seeing and resolving stress in their lives!](#)



Brain Integration 1 includes:

- An introduction to Brain structure and function.
- Gestalt and Logic "Lead" functions.
- The Amygdala Fear/Pain Control Circuit (our Survival Circuits).
- Deep Level Switching - the cause of delayed language development, Psychological Reversals and Conflicts.
- Blocked Corpus Callosum and other Commissural Pathways that can cause the loss of Brain Integration and affect our ability to **resolve challenges** rather than **react** to them.
- Hippocampus - seat of our short term memory and learning.
- Celestial Circuit - under stress, we sometime split off or dissociate so it can be difficult to locate imbalances. Aligns all of our energy structures so we balance to a core stable energy system.

Prerequisites: Applied Physiology Hologram Series, EKP, Touch for Health 1-4 or other Kinesiology courses that will give you strong corrective techniques. LEAP teaches you how to access, format and work with Specific Learning dysfunction but requires you to utilise your repertoire of skills for correction.

5 days - Times: 9am - 6pm
[See next page for Dates and Registration](#)



Learning Enhancement Advanced Program NeuroAcuSynch

The LEAP NeuroAcuSynch courses are fully accredited with the Australian Kinesiology Association for either **Kinesiology** or **50% Anatomy and Physiology** hours.

Instructor: Jacque Mooney

Please enclose a non-refundable deposit of \$300 for the 2017 LEAP Brain Integration 1 Workshop in:

___ Ruckersville, VA, USA Sept 20 - 24, 2017 \$1200*

***Special Offer:** If you are attending another kinesiology course in Ruckersville instructed by Jacque Mooney, such as LEAP Brain Integration 2 or Simply the Brain 1, you are eligible for \$100 off the total cost.

*Please ensure course dates are confirmed before booking flights and accommodation.

NAME: _____

PHONE: _____ MOBILE: _____

ADDRESS: _____

_____ POSTCODE: _____

EMAIL ADDRESS: _____

Suggested Prep: BEFORE TAKING BI COURSES, Get (and Do!) the following BRAIN COLOURING BOOK

A Colourful Introduction to the Anatomy of the Human Brain by [John P. J. Pinel](#), [Maggie E. Edwards](#) 264 pgs
Available from Michael Wild at **Equilibrium** on 03 9578 1229 <http://www.kinesiologyshop.com/eqob4.htm>

For inquiries contact: Chena Anderson ND brilliantmindnd@gmail.com **Ph: +1 (417) 827 2561**

Payments to: Chena Anderson 175 Lamm Rd., Ruckersville VA 22968

Repeaters - half price plus materials/manuals for all courses.

Deposits are required minimum three weeks prior to the course and are non-refundable; balance payable on day 1.