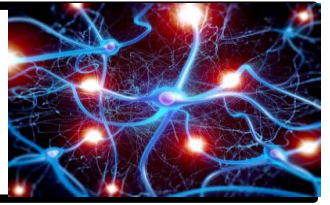




# Learning Enhancement Advanced Program



## ***BRAIN INTEGRATION 2***

### **Introduction:**

LEAP® (Learning Enhancement Advanced Program) is a program that enhances brain function, learning and all areas of performance. The foundation of all high level performance and learning is integrated brain function because the brain is a multi-modular structure “bound” together functionally by synchronized timing of neural activity. Performance of any mental activity can be considered the “symphony of thought”. Like an orchestra of many musical instruments, the output of each brain module has to be precisely “timed” to prevent the symphony of mental function from turning into the cacophony or noise of dysfunction.

The purpose of LEAP® Brain Integration is to re-establish the synchronized timing of brain activity to bring function back “on-line” in areas where it may have become lost due to stress, or was never properly established in the first place (e.g. children with learning problems). This loss of Brain Integration and thus function may be only situational, causing difficulty and stress performing certain functions in specific situations or circumstances (e.g. stage fright), or it may be ongoing as in the case of Specific Learning Difficulties.

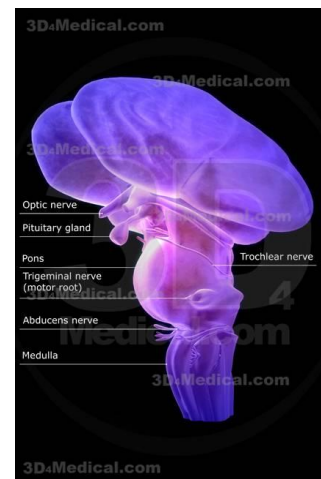
Correction of this loss of timing of synchronized brain function that blocks our true potential is a two step process:

- 1) The state of integrated brain function must first be established; and
- 2) that integrated state must then be challenged with a particular task to see if it can be maintained under the “stress” of performing that task. When Brain Integration is held, we maintain a high level of performance, but when it is lost we suddenly become dysfunctional resulting in decreased performance and increased levels of stress.

### **What you will learn in *Brain Integration 2*: (6 Days)**

#### **The next step – going deeper into the Survival Systems of the Brain.**

- Core Concepts of Neurology & Neurophysiology of: the *Reticular Activating System*.
- Kinesiological Formats for the *Reticular Nuclei*.
- Core Concepts of Neurology & Neurophysiology of: the *Brainstem & Brainstem Nuclei*.
- PAG (Periaqueductal Grey Matter) the seat of the Proto-self.
- PVG (Periventricular Grey Matter) & Deeper Brainstem Switching.
- *Vestibular System*: the Vestibular Apparatus & Nuclei & their role the control of *Posture and Equilibrium*.
- Pontine & Parabrachial Nuclei: the Emotional & Mental Relays.
- Core Concepts of Neurology & Neurophysiology of *the Cerebellum & Deep Cerebellar Nuclei*.
- *Evolution* of the Cerebellum.
- Cerebellum and *Motor function*.
- *Cerebellar Connectivity*.
- *Deep Cerebellar Nuclei*: Structure and Function.
- *Sensory & Motor Spinal Tracts*.
- Kinesiological Formatting for all of the above and how they inter-relate.
- Applications of Brainstem & Cerebellar formatting in *Clinical Situations*.
- The *Emotional & Mental Modulatory Circuits* of the brain.
- The 3 Pillars



**Ruckersville USA    6 days    Sept 28 – Oct 3, 2017    Time: 9 am – 6 pm**



# Learning Enhancement Advanced Program NeuroAcuSynch

The LEAP NeuroAcuSynch courses are fully accredited with the Australian Kinesiology Association for either Kinesiology or 50% Anatomy and Physiology hours.

**Prerequisites:** Brain Integration 1.

*Anatomy and Physiology of the Brain (AP Brain Physiology), SIPS 1, and 7 Ch'i Keys (balancing 9 types of chakra imbalances with acupuncture) are highly recommended to enhance the efficiency and effectiveness of balancing.*

*Suggested Prep: BEFORE TAKING BI COURSES, GET (and Do!) a BRAIN COLOURING BOOK.*

A Colorful Introduction to the Anatomy of the Human Brain By [John P. J. Pinel](#), [Maggie E. Edwards](#) 264 pages  
Available from Michael Wild at **Equilibrium** on 03 9578 1229 <http://www.kinesiologyshop.com/eqob4.htm>

**Note:** Please bring along your kinesiology support and correction material, including LEAP BI 1 materials.

The above course is fully accredited with the Australian Kinesiology Association or either Kinesiology or Anatomy and Physiology (50%) hours.

## Brain Integration 2 - 6 days Instructor: Jacque Mooney

Please enclose a deposit of \$300 for the **Brain Integration 2 Workshop** in:

\_\_\_\_\_ Ruckersville, VA      Sept 28 - Oct. 3, 2017      \$1400\*

**\*Special Offer:** If you are attending another kinesiology course in Ruckersville instructed by Jacque Mooney, such as LEAP Brain Integration 1 or Simply the Brain 1, you are eligible for \$100 off the total cost.

Deposits are required three weeks prior to the course and are non-refundable.  
Repeaters - **half price plus materials/manuals for all courses.**

**NAME:** \_\_\_\_\_

**TEL:** \_\_\_\_\_ **Mob.** \_\_\_\_\_

**ADDRESS:** \_\_\_\_\_ **POSTCODE:** \_\_\_\_\_

**EMAIL ADDRESS:** \_\_\_\_\_

**For inquiries contact:** Chena Anderson ND [brilliantmindnd@gmail.com](mailto:brilliantmindnd@gmail.com)  
Ph: +1 (417) 827 2561

**Payments to:** Chena Anderson,  
175 Lamm Rd., Ruckersville VA 22968

\* Please note: **Before booking flights or accommodation, please confirm the course is proceeding as planned.**

In the case that the course may be cancelled every endeavor will be made to give as much notice as possible.